

10. GTE Din Rail Mounting Module Type Temperature Controller

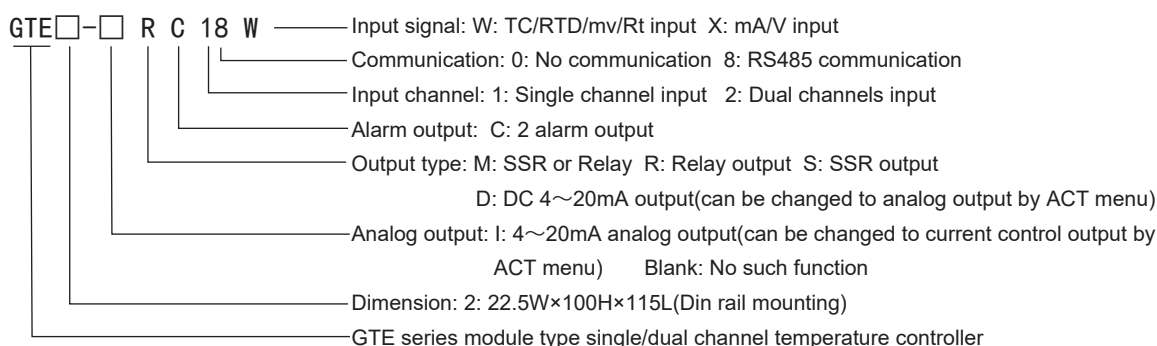
Photos and Features



Features:

- ★ Module type design, din rail mounting, with display, easy setting, no need to install display module separately.
- ★ RS485 communication, easy to communicate with PLC, HMI.
- ★ With intelligent PID control and auto-turning function.
- ★ RELAY/SSR, 4~20mA control output available.

Model Illustration



Ordering Information

| Model | Channel | Control output function | RS485 | Alarm | Analog 4~20mA | Code |
|----------------|----------------|-------------------------------------|-------|-------|-------------------------------|------------|
| GTE2-MC10W/X | Single channel | SSR, Relay output | No | 2 | No | B0380GTE01 |
| GTE2-MC18W/X | | SSR, Relay output | Yes | 2 | No | B0490GTE01 |
| GTE2-IMC10W/X | | SSR, Relay output, 4~20mA available | No | 2 | multiplex with control output | B0450GTE01 |
| GTE2-IMC18W/X | | SSR, Relay output, 4~20mA available | Yes | 2 | multiplex with control output | B0560GTE01 |
| GTE2-RC20T/R/X | Dual channel | Relay output | No | 2 | No | B0520GTE01 |
| GTE2-RC28T/R/X | | Relay output | Yes | 2 | No | B0620GTE01 |
| GTE2-SC20T/R/X | | SSR output | No | 2 | No | B0520GTE01 |
| GTE2-SC28T/R/X | | SSR output | Yes | 2 | No | B0620GTE01 |
| GTE2-DC20T/R/X | | 4~20mA | No | 2 | multiplex with control output | B0620GTE01 |
| GTE2-DC28T/R/X | | 4~20mA | Yes | 2 | multiplex with control output | B0720GTE01 |

Note: Input signal 4~20mA, 0~10V and power supply DV24V need to be ordered, please indicate it before place and order.

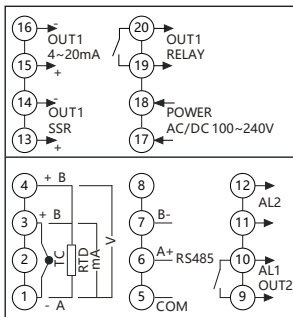
Technical Specifications

| | | | |
|----------------------|---|--|--|
| Sampling rate | 2 times per second | ESD | IEC/EN61000-4-2 Contact ±4KV /Air ±8KV perf.Criteria B |
| Relay capacity | AC 250V /3A Life of rated load>100000/time | Pulse triap anti-interference | IEC/EN61000-4-4 ±2KV perf.Criteria B |
| Power supply | AC/DC 100 ~ 240V (85-265V) | Surge immunity | IEC/EN61000-4-5 ±2KV perf.Criteria B |
| Total consumption | < 6VA | Voltage drop & short interruption immunity | IEC/EN61000-4-29 0% ~ 70% perf.Criteria B |
| Ambient environment | Indoor use, temperature:0 ~ 50°C, no condensation, humidity:<85%RH, altitude2000m | Dielectric strength | Signal input & output & power 1500VAC 1min, <60V Low voltage circuit between DC500V,1min |
| Storage environment | -10 ~ 60°C, no condensation | Weight | About 400g |
| SSR output | DC 24V impulse level, load<30mA | Shell material | PA66-FR(flame class UL94V-0) |
| Current output | DC 4 ~ 20mA load<500Ω, temperature drift 250PPM | Panel material | PVC and PEM |
| Communication port | RS485 port Modbus-RTU protocol, maximum input: 30 units | Power-off protection | 10 years, times of writing:1 million times |
| Insulation impedance | Input, output, power cabinet>20MΩ | Safe standard | IEC61010-1 Overvoltage category II, pollution level 2, level II (Enhanced insulation) |

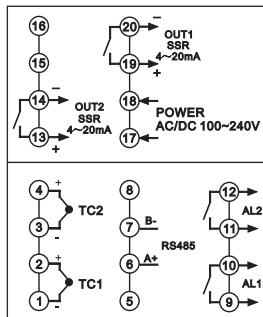
Measuring signal parameters

| Input | Symbol | Measuring range | Resolution | Accuracy | Input impedance/ auxiliary current |
|----------|--------|-----------------|------------|-----------------|------------------------------------|
| K | ⌚ | -50 ~ 1200 | 1°C | 0.5%F.S±3digits | >500kΩ |
| J | ⌚ | 0 ~ 1200 | 1°C | 0.5%F.S±3digits | >500kΩ |
| E | ⌚ | 0 ~ 850 | 1°C | 0.5%F.S±3digits | >500kΩ |
| T | ⌚ | -50 ~ 400 | 1°C | 0.5%F.S±2°C | >500kΩ |
| S | ⌚ | -10 ~ 1600 | 1°C | 0.5%F.S±1°C | >500kΩ |
| PT100 | ⌚ | -200 ~ 600 | 0.2°C | 0.5%F.S±3digits | 0.2mA |
| CU50 | ⌚ | -50 ~ 150 | 0.2°C | 0.5%F.S±3°C | 0.2mA |
| CU100 | ⌚ | -50 ~ 150 | 0.2°C | 0.5%F.S±1°C | 0.2mA |
| 0 ~ 50mV | ⌚ | -1999 ~ 9999 | 12bit | 0.5%F.S±3digits | >500kΩ |
| 0 ~ 400Ω | ⌚ | -1999 ~ 9999 | 12bit | 0.5%F.S±3digits | 0.2mA |
| 4 ~ 20mA | ⌚ | -1999 ~ 9999 | 12bit | 0.5%F.S±3digits | 100Ω |
| 0 ~ 10V | ⌚ | -1999 ~ 9999 | 12bit | 0.5%F.S±3digits | >1MΩ |

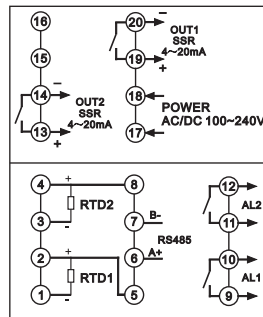
Connection



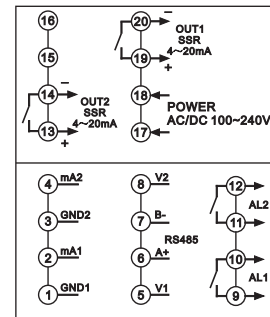
Single channel connection



GTE2-T



GTE2-R

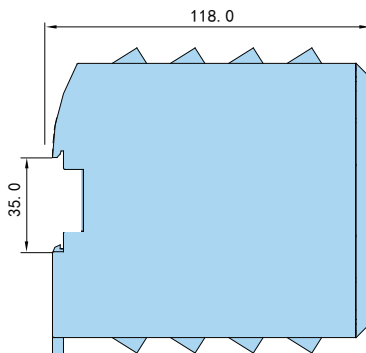
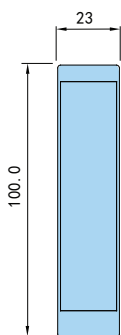


GTE2-X

Dual channels connection

Note: if any change, please subject to the connection drawing on the meter.

Dimension & Installation (units: mm)



| |
|--------------------------|
| Panel Meter |
| Sensor Indicator |
| Temperature Controller |
| Counter |
| Timer Relay |
| Tacho/Speed/Pulse Meter |
| Recorder |
| Signal Isolator |
| Rotary Encoder |
| Proximity Sensor |
| Solid State Relay |
| Power Meter Introduction |