

RMA –Series

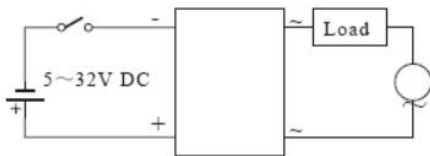


■ Specifications

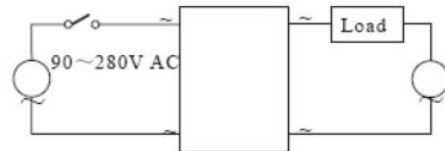
Compression strength input-output	$\geq 500M\Omega$	Output rated current (Amps)	15, 25, 40, 60, 80A AC
Insulation strength input-output	2000Vrms	Off-state leakage current (Max)	$\leq 10mA$ AC
Insulation strength input/output-shell	2000Vrms	Voltage	24~400VAC 24~230VAC
Input control range	5~32Vdc/90~280Vac	Peak voltage	800Vp-p
Input current	$\leq 10mA(DC)/\leq 25mA(AC)$	Weight	110g
Active voltage	$\geq 4.5Vdc/80Vac$	Closed saturated buck	1.8V/25°C
Deactive voltage	$\leq 3Vdc/10Vac$	Action response time	ON<10ms, OFF<10ms
Material	ABS+PC(flame retardance)	Ambient temperature	-20°C~80°C / -40°C~100°C

■ Connections

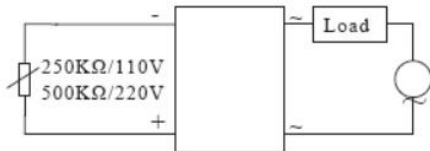
1、DC control AC



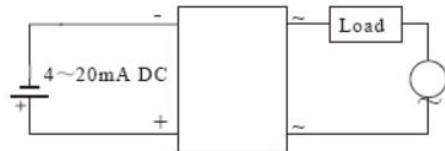
2、AC control AC



3、Adjustable resistance control



4、4-20mA Current control



5、 Installation Note

- ◇ Use a heat sink (accessory) to protect solid state relays, and the heat sink must be grounded.
- ◇ Must install quick fuse.
- ◇ Radiator must choose correct model according to the work-environment temperature and load current.
- ◇ Contact distance between the heat sink and radiator should not be greater than 0.05mm when you install the radiator the rough degree should not be greater than 0.02mm.

Note:

It can ensure the thermal conductivity without impurities using a gram of thermal Grease to paint on metal surface of heat sink.

Tightening up the 2 nuts in turn, the M4 nut torque of 1.2 NM , the M5 nut torque of 0.75 M.

Suggest that open check whether the normal installation, ensure the metal coating and heat conduction layer without bubbles.

■ Dimension (unit:mm)

